

## health & development

**Northern Health: 638-2200**

Vision, Dental, Speech & Language,  
Nutrition, Audiology, Injury Prevention, Public  
Health, Environmental Health, Licensing

**Child Development Centre**

**Eby Centre: 635-9388**

Physiotherapy, Occupational Therapy,  
Speech & Language, Supported Child  
Development, Infant Development,  
Pre-school

**Child Development Centre**

**Park Centre: 635-1830**

Building Healthier Babies, Building Blocks,  
Parenting Groups, Fathers' Group

**Success by 6 NW/The Family Place:  
638-1863**

**Aboriginal Supported Child Development,  
New Aiyansh: 633-2319**

**RCMP: 638-7400**

**Child Find-All About Me ID Clinic**

## childcare

**Skeena Child Care Resource & Referrals:  
638-1113**

**Northwest Community College -  
Early Childhood Education: 635-6511**

**Kitselas HeadStart: 635-5084**

## gross motor area

**Child Development Centre**

**Eby Centre: 635-9388**

**City of Terrace, Leisure Services: 615-3000**

## family supports

**Kermode Friendship Society**

**Early Child Development : 635-1476**

Aboriginal Early Childhood Development  
(AECD) Aboriginal Infant Development (AIDP)  
Complex Developmental Behavioral  
Conditions (CDBC) Community Action Plan for  
Children (CAP-C) Circle of Life (COL)  
1 on 1 parent support and advocacy

**Ksan House Society: 635-2373**

**Suwilaawks Strong Start Centre:  
635-5828 ext. 7301**

**TDCSS' Youth & Family Support: 635-7087**  
Parent Connections

**Northwest Science and Innovation Society  
(NSIS): 638-0950**

**Skeena MLA Office: 638-7906**

## literacy

**Coast Mountains School District  
Ready Set Learn:**

Kiti K'Shan Primary: 635-3115

Suwilaawks Community School: 635-5828

Thornhill Primary: 635-7066

Uplands Elementary: 635-2721

North Coast Distance Education: 635-7944

**Terrace Public Library: 638-8177**

**Canadian Parents for French/école Jack  
Cook: 638-1198**

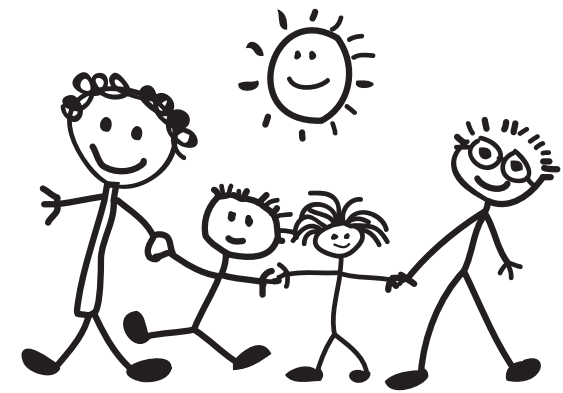
**Kermode Friendship Society**

**Aboriginal Family Literacy: 635-4906 ext. 26**

## reading area

**Storytime every 15 min.**

Favourite childhood stories read by  
community members



# Welcome to Early Years Family Fair 2008

prenatal to age 6

everyone welcome  
free of charge

Sponsored by:  
Make Children First Network,  
Coast Mountains School District,  
City of Terrace, Success by 6

### SPECIAL THANK YOU TO OUR VOLUNTEERS:

Adult Mental Health Work Crew, Terrace Volunteer Bureau, Kermode Friendship Society's Youth Group, Park Centre's Fathers' Group, Terrace Anti-Poverty, Suwilaawks Community School, Thornhill Elementary School



## Make Children First Network

**Make Children First Network** works within the field of early childhood and community development, helping to create a community where children and their families are valued, supported, inspired and celebrated by all of us.

### our mission...

Supporting families with children 0 to 6 in Terrace & District and local First Nations communities.

### our vision...

A community where all children are valued and will develop to their full potential.

### we believe and strive for...

- Families are the most important influence on children's development
- Networks of family, friends and neighbours exist
- Everyone has adequate food, housing and safety
- A comprehensive infrastructure of supports and services exists with equitable access for all
- Diversity and inclusion of all ages, cultures, abilities, socioeconomic and education levels, is valued. There is no racism
- People are open minded, non-judgmental and respectful of differences of potentials
- Time and respect is given to healing
- We share trust and commitment to our vision that allows us to move forward
- We are grounded in a solid foundation of common values of a healthy community

### contact us:

Phone: 635-8761

Email: [info@terracechildren.org](mailto:info@terracechildren.org)

Website: [www.terracechildren.org](http://www.terracechildren.org)

gross motor area:  
climb, explore

food area

childcare

May 10 1008  
Early Years Family Fair  
Terrace Arena

health &  
development

park

RCMP ID Clinic

family  
supports

health &  
development

reading  
area

literacy

welcome &  
information